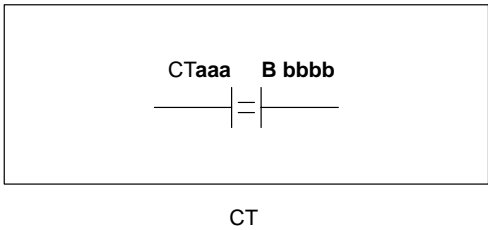


Comparative Boolean Instructions

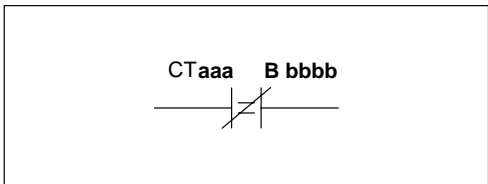
Store If Equal (STR) DL330/DL340 Only

The Store If Equal instruction begins a new rung or additional branch in a rung with a normally open comparative counter contact. The contact will be on if the specified counter CT aaa = B bbbb.



Store Not If Equal (STR NOT) DL330/DL340 Only

The Store Not If Equal instruction begins a new rung or additional branch in a rung with a normally closed comparative counter contact. The contact will be on if the specified counter CT aaa \neq B bbbb.



Operand Data Type		D3-330 Range		D3-340 Range		D3-330P Range*	
	B	aaa	bbbb	aaa	bbbb	aaa	bbbb
Counters	CT	600-677	—	600-677	—	—	—
Data registers	R	—	400-577	—	400-577 700-777	—	—
Constant	K	—	0-9999	—	0-9999	—	—

* See Chapter 12 for similar RLL *PLUS* instructions

In the following Store If Equal example, when CT600 = 2510 output 012 will energize.

DirectSOFT Display



Handheld Programmer Keystrokes

STR	SHF	6	0	0	ENT
SHF	2	5	1	0	ENT
OUT	SHF	0	1	2	ENT

In the following Store Not If Equal example, when CT600 is \neq the value in R400 output 020 will energize.

DirectSOFT Display

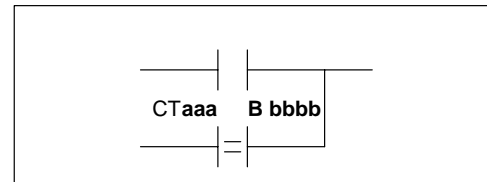


Handheld Programmer Keystrokes

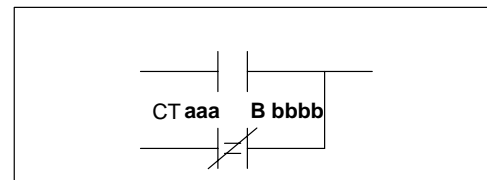
STR	NOT	SHF	6	0	0	ENT
R	4	0	0	ENT		
OUT	SHF	0	1	2	ENT	

**Or If Equal
(OR)
DL330/DL340 Only**

The Or If Equal instruction connects a normally open comparative counter contact in parallel with another contact. The contact will be on if the specified counter CT aaa = B bbbb.

**Or Not If Equal
(OR NOT)
DL330/DL340 Only**

The Or Not If Equal instruction connects a normally closed comparative counter contact in parallel with another contact. The contact will be on if the specified counter CT aaa \neq B bbbb.

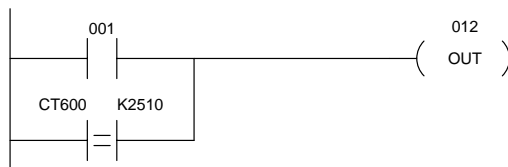


Operand Data Type		D3–330 Range		D3–340 Range		D3–330P Range*	
	B	aaa	bbbb	aaa	bbbb	aaa	bbbb
Counters	CT	600–677	—	600–677	—	—	—
Data registers	R	—	400–577	—	400–577 700–777	—	—
Constant	K	—	0–9999	—	0–9999	—	—

* See Chapter 12 for similar RLL ^{PLUS} instructions

In the following Or If Equal example, when input contact 001 is on or CT600 = 2510 output 012 will energize.

DirectSOFT Display

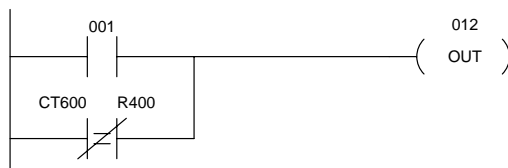


Handheld Programmer Keystrokes

STR	SHF	1	ENT
OR	SHF	6	0 0 ENT
SHF	2	5	1 0 ENT
OUT	SHF	0	1 2 ENT

In the following Or Not If Equal example, when input contact 001 is on or CT600 \neq the value in R400 output 012 will energize.

DirectSOFT Display

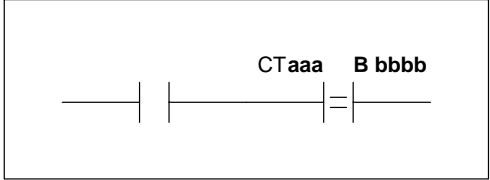


Handheld Programmer Keystrokes

STR	SHF	1	ENT
OR	NOT	6	0 0 ENT
R	4	0	0 ENT
OUT	SHF	0	1 2 ENT

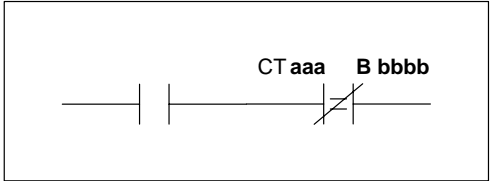
**And If Equal
(AND)
DL330/DL340 Only**

The And If Equal instruction connects a normally open comparative counter contact in series with another contact. The contact will be on if the specified counter CT aaa = B bbbb.



**And Not If Equal
(AND NOT)
DL330/DL340 Only**

The And Not If Equal instruction connects a normally closed comparative counter contact in series with another contact. The contact will be on if the specified counter CT aaa \neq B bbbb.

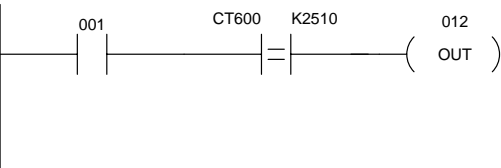


Operand Data Type		D3-330 Range		D3-340 Range		D3-330P Range*	
	B	aaa	bbbb	aaa	bbbb	aaa	bbbb
Counters	CT	600-677	—	600-677	—	—	—
Data registers	R	—	400-577	—	400-577 700-777	—	—
Constant	K	—	0-9999	—	0-9999	—	—

* See Chapter 12 for similar RLL *PLUS* instructions

In the following And If Equal example, when input contact 001 is on and CT600 = 2510 the contact will turn on and output 012 will energize.

DirectSOFT Display

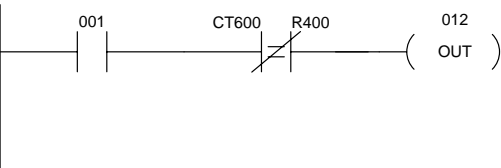


Handheld Programmer Keystrokes

STR	SHF	1	ENT
AND	SHF	6	0 0 ENT
SHF	2	5	1 0 ENT
OUT	SHF	0	1 2 ENT

In the following And Not If Equal example, when input contact 001 is on and CT600 \neq the value in R400 output 012 will energize.

DirectSOFT Display



Handheld Programmer Keystrokes

STR	SHF	1	ENT
AND	NOT	6	0 0 ENT
R	4	0	0 ENT
OUT	SHF	0	1 2 ENT