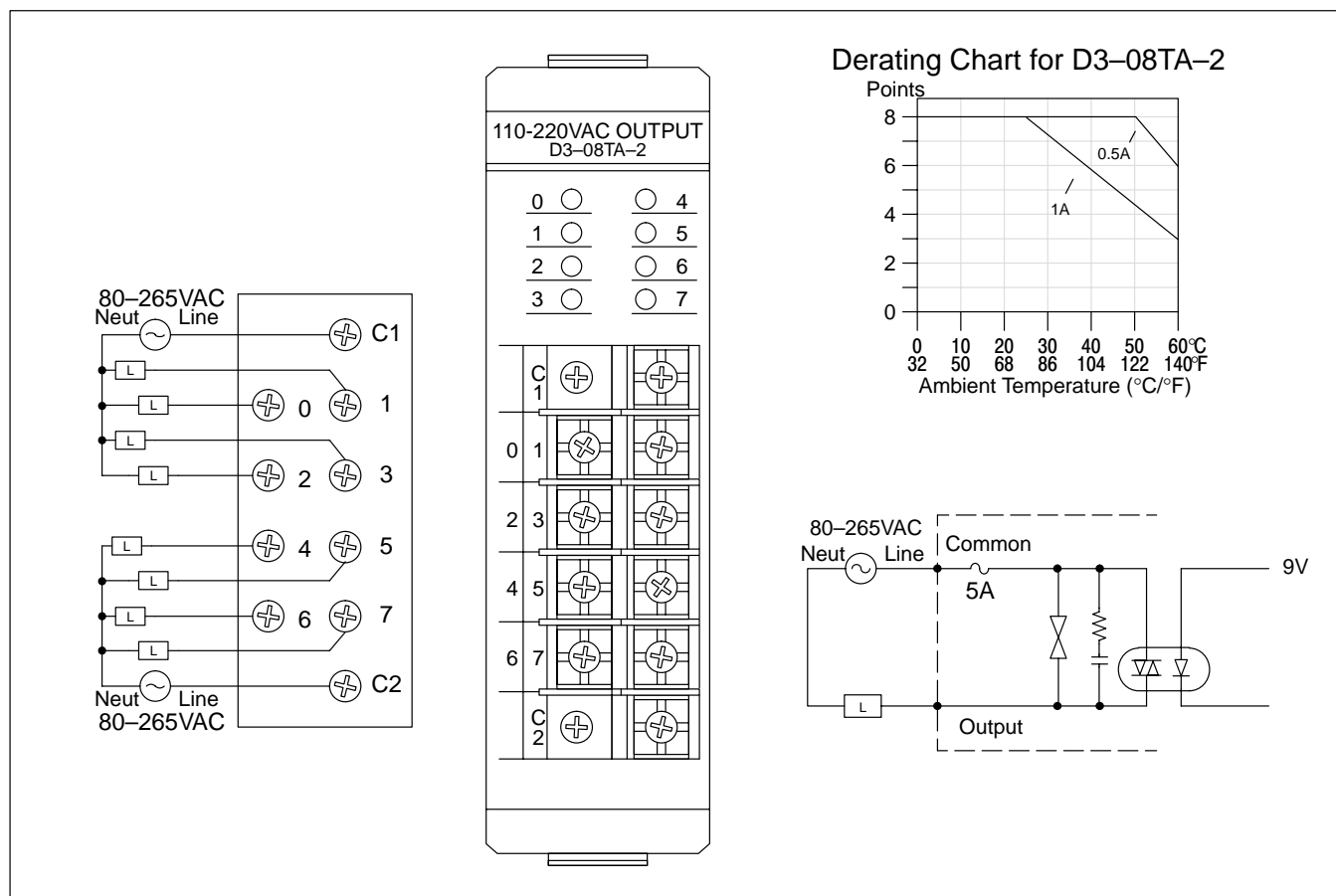


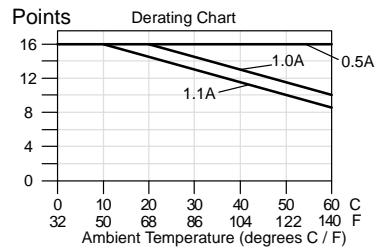
D3-08TA-2, 110-220 VAC Output Module

Outputs per module	8	Base power required	9V 20mA/ON pt. (160 mA Max) 24V N/A
Commons per module	2 (isolated)	OFF to ON response	1 ms Max
Operating voltage	80-265VAC	ON to OFF response	8.33 ms Max
Output type	Triac	Terminal type	Non-removable
Peak voltage	265VAC	Status indicators	Logic Side
AC frequency	47-63 Hz	Weight	6.4 oz. (180 g)
ON voltage drop	1.5 VAC @ 1A	Fuses	(2) One 5A per common Non-replaceable
Max current	1A / point 3A / common		
Max leakage current	1.2 mA @ 220VAC 0.52 mA @ 110VAC		
Max inrush current	10A for 16 ms 5A for 100 ms		
Minimum load	25 mA		

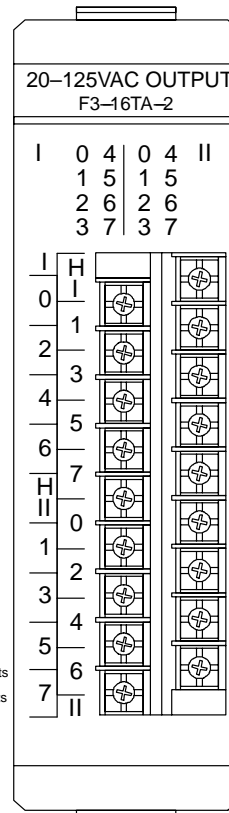
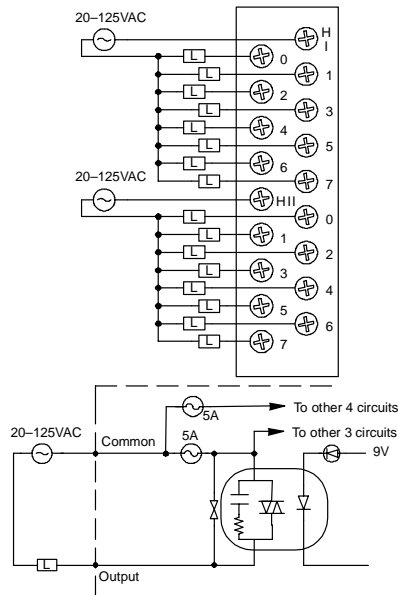


F3-16TA-2, 20-125 VAC Output Module

Outputs per module	16	Minimum load	50mA
Commons per module	2 (isolated)	Base power required	9V 14mA / ON pt. 250mA Max. 24V N/A
Operating voltage	20 – 125VAC	OFF to ON response	8ms Max.
		ON to OFF response	8 ms Max.
Output type	SSR Array (TRIAC)	Terminal type	Removable
Peak voltage	140 VAC	Status indicators	Logic Side
AC frequency	47 – 63Hz	Weight	7.7oz. (218g)
ON voltage drop	1.1VAC @ 1.1A	Fuses (One spare fuse included)	4 (One 5A 125V fast blow per each group of four outputs) Order D3-FUSE-4 (5 per pack)
Max current	1.1A / point		
Max leakage current	0.7mA @ 125VAC		
Max inrush current*	15A for 20ms 8A for 100ms		



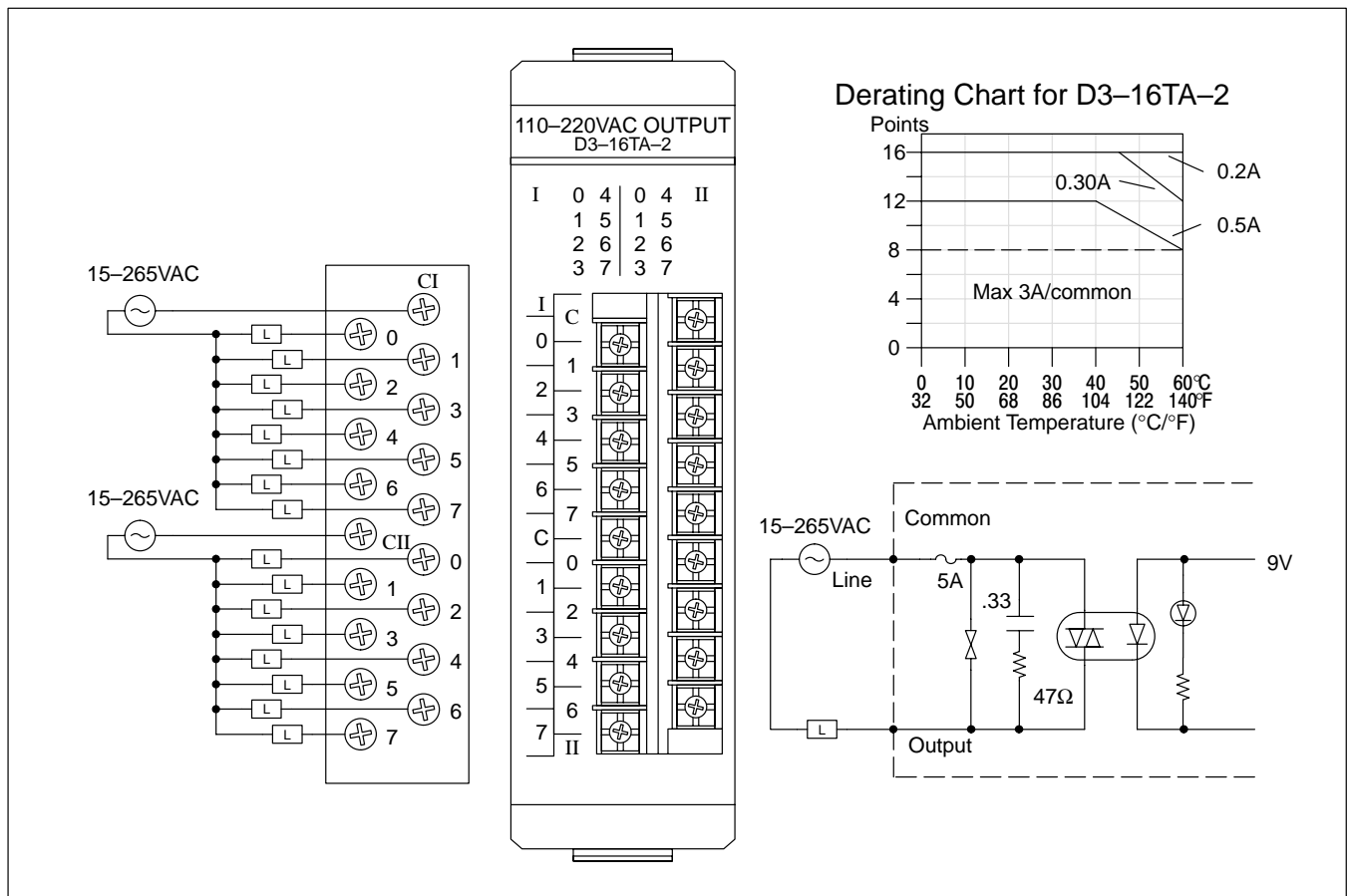
*Fuse blows at 20 Amp surge
Motor starters up to and including a NEMA size 3 can be used with this module.



D3-16TA-2, 110-220 VAC Output Module

Outputs per module	16	Minimum load	10 mA @ 15VAC
Commons per module	2 (isolated)	Base power required *	9V 25mA Max /ON pt. 400 mA Max 24V N/A
Operating voltage	15-265 VAC	OFF to ON response	1 ms Max
Output type	Triac	ON to OFF response	9 ms Max
Peak voltage	265 VAC	Terminal type	Removable
AC frequency	47-63 Hz	Status indicators	Logic Side
ON voltage drop	1.5 VAC @ 0.5A	Weight	7.2 Oz. (210 g)
Max current	0.5A / point 3A / common 6A / per module	Fuses	(2) One 5A per common Non-replaceable
Max leakage current	4 mA @ 265 VAC		
Max inrush current	10A for 10 ms 5A for 100 ms		

* 9V typical values 17mA/ON pt., 272 mA total



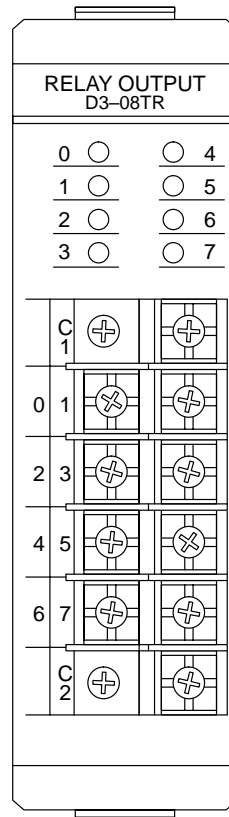
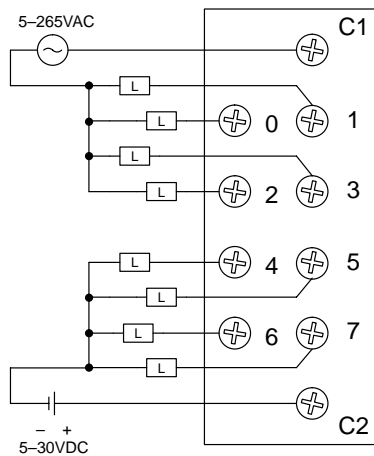
D3-08TR, Relay Output Module

Outputs per module	8	Minimum load	5 mA @ 5v
Commons per module	2 (isolated)	Base power required	9V 45 mA/ON pt. (360 mA Max) 24V N/A
Operating voltage	5-265VAC 5-30VDC	OFF to ON response	5 ms
Output type	Form A (SPST)	ON to OFF response	5 ms
Peak voltage	265VAC / 30VDC	Terminal type	Non-removable
AC frequency	47-63 Hz	Status indicators	Logic Side
ON voltage drop	N/A	Weight	7 oz. (200 g)
Max current	4A / point AC 5A / point DC 6A / common	Fuses	(2) One 10A per common User replaceable
Max leakage current	1 mA @ 220VAC		
Max inrush current	5A		

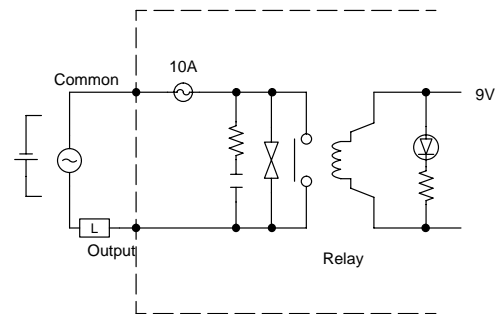
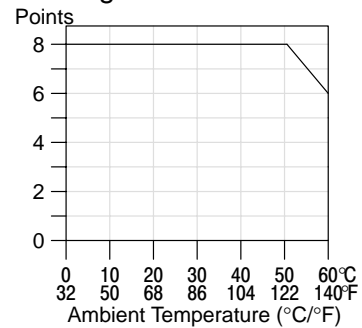
Typical Relay Life (Operations)

Voltage Resistive Solenoid Closures

220VAC	4A	0.5A	100k
220VAC		0.05A	800k
110VAC	4A	0.5A	100k
110VAC		0.1A	650k
24VDC	5A	0.5A	100k



Derating Chart for D3-08TR

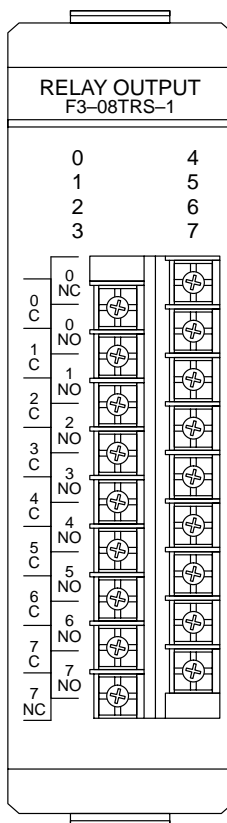
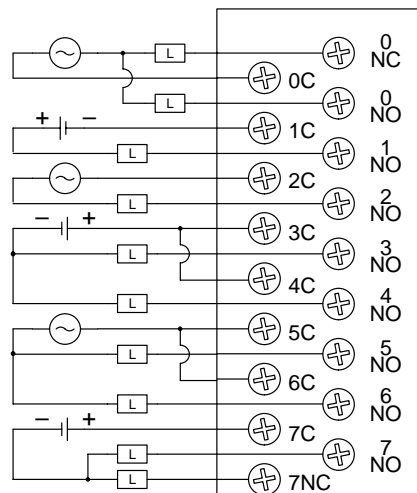
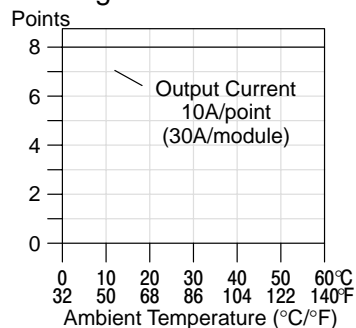


F3-08TRS-1, Relay Output Module

Outputs per module	8	Max leakage current	N/A
Commons per module	8 (isolated)	Max inrush current	10A Inductive
Operating voltage*	12–125 VAC 125–250 VAC requires external fuses 12–30 VDC	Minimum load	100 mA @12VDC
Output type	6 Form A (SPST) 2 Form C (SPDT)	Base power required	9V 37mA / ON pt. (296 mA Max) 24V N/A
Peak voltage	265 VAC / 120 VDC	OFF to ON response	13 ms Max
AC frequency	47–63 Hz	ON to OFF response	9 ms Max
ON voltage drop	N/A	Terminal type	Removable
Max current (resistive)	10A / point AC/DC 30A / module AC/DC	Status indicators	Logic Side
		Weight	8.9 oz. (252 g)
		Fuses	(8) One 10A (125V) per common Non-replaceable

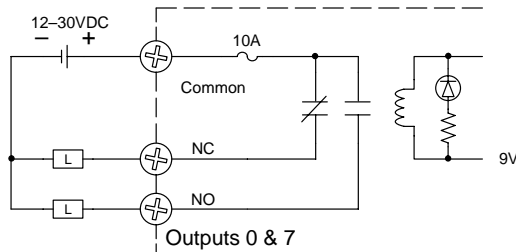
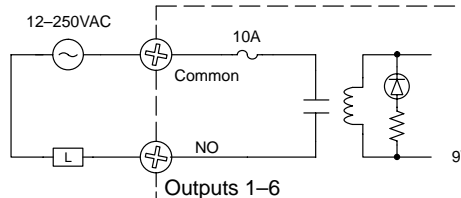
NOTE: Contact life may be lengthened beyond those values shown by the use of an appropriate arc suppression. This technique is discussed earlier in this chapter.

Derating Chart for F3-08TRS-1



Typical Relay Life (Operations)

Maximum Resistive or Inductive Inrush Load Current	Operating Voltage		
	28VDC	120VAC	240VAC
1/4HP 10.0A 5.0A 3.0A .05A	50K 200K 325K >50M	25K 50K 100K 125K	50K



*Maximum DC voltage rating is 120 VDC at .5 Amp, 30,000 cycles typical

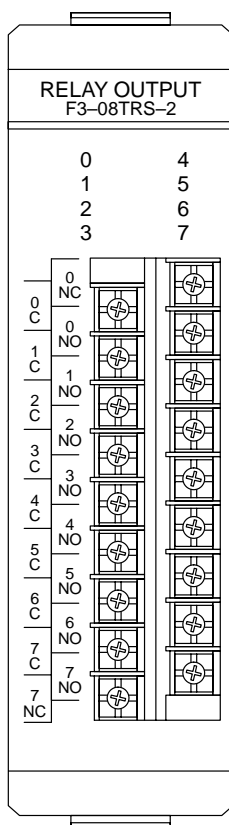
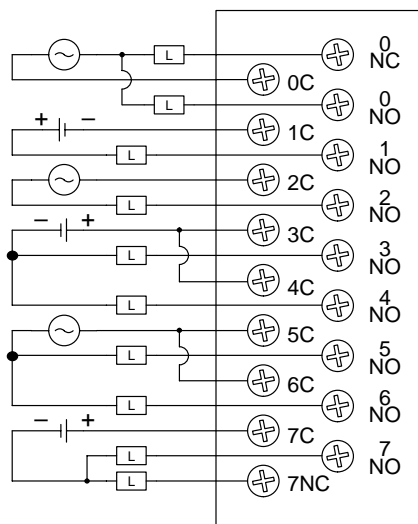
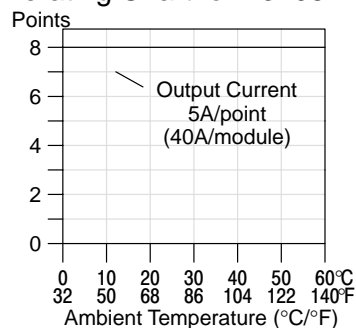
Motor starters up to and including a NEMA size 4 can be used with this module.

F3-08TRS-2, Relay Output Module

Outputs per module	8	Max leakage current	N/A
Commons per module	8 (isolated)	Max inrush current	10A Inductive
Operating voltage*	12–125 VAC 125–250 VAC requires external fuses 12–30 VDC	Minimum load	100 mA @12VDC
Output type	6 Form A (SPST) 2 Form C (SPDT)	Base power required	9V 37mA / ON pt. (296 mA Max) 24V N/A
Peak voltage	265 VAC / 120 VDC	OFF to ON response	13 ms Max
AC frequency	47–63 Hz	ON to OFF response	9 ms Max
ON voltage drop	N/A	Terminal type	Removable
Max current (resistive)	5A / point AC/DC 40A / module AC/DC	Status indicators	Logic Side
		Weight	9 oz. (255 g)
		Fuses 19379-K-10A Wickman	(8) One 5A (125V) per common User replaceable

NOTE: Contact life may be lengthened beyond those values shown by the use of an appropriate arc suppression. This technique is discussed earlier in this chapter.

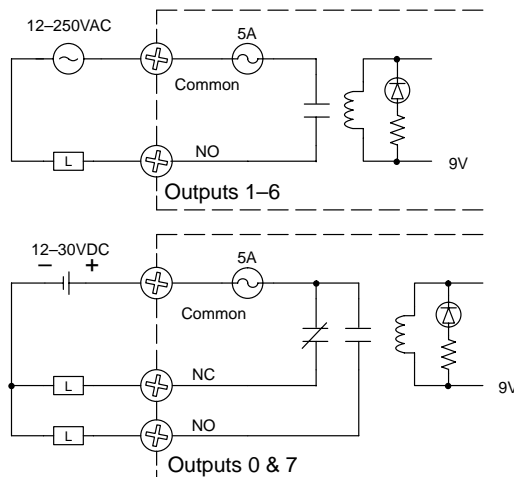
Derating Chart for F3-08TRS-2



Typical Relay Life (Operations)

Maximum Resistive or Inductive Inrush Load Current	Operating Voltage		
	28VDC	120VAC	240VAC
5.0A	200K	100K	50K
3.0A	325K	125K	
.05A	>50M		

Expected mechanical relay life is 100 million operations.



*Maximum DC voltage rating is 120 VDC at .5 Amp, 30,000 cycles typical

Motor starters up to and including a NEMA size 3 can be used with this module.

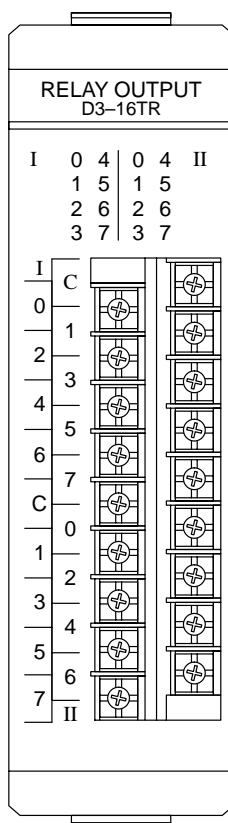
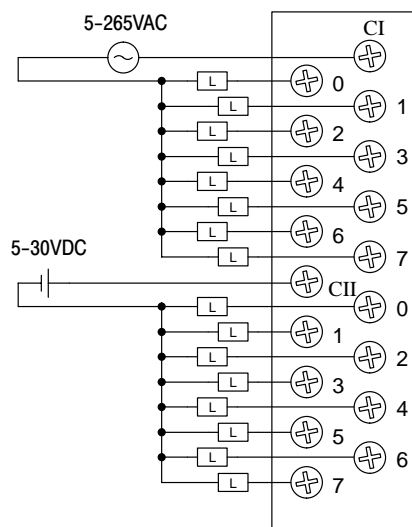
D3-16TR, Relay Output Module

Outputs per module	16	Minimum load	5 mA @ 5v
Commons per module	2 (isolated)	Base power required	9V 30 mA/ON pt. (480 mA Max) 24V N/A
Operating voltage	5-265 VAC 5-30 VDC	OFF to ON response	12 ms
Output type	16 Form A (SPST)	ON to OFF response	12 ms
Peak voltage	265 VAC / 30 VDC	Terminal type	Removable
AC frequency	47-63 Hz	Status indicators	Logic Side
ON voltage drop	N/A	Weight	8.5 oz. (248g)
Max current	2A / point AC/DC (resistive) 8A / common AC/DC	Fuses	None
Max leakage current	0.1mA @ 220 VAC		
Max inrush current	2A		

Typical Relay Life (Operations)

Voltage Resistive Solenoid Closures

220VAC	2A	0.25A	100k
220VAC		0.03A	800k
110VAC	2A	0.25A	100k
110VAC		0.05A	650k
24VDC	2A	0.25A	100k



Derating Chart for D3-16TR

