

**Pro-face**  
for the best interface

Touch Operator Interface

40  
th

# GP4000 SERIES

visibility





## Enhanced Visibility

All models employ 65,535-color TFT LCDs with enhanced backlight brightness control. Crisp screens improve monitoring quality and safer operation.



## Mobile Remote Monitoring

Remotely monitor large-sized or long-distance applications, large process systems, or multiple machines on a manufacturing site on an easy-to carry iPhone, iPad, iPod touch, Android smartphone or Android tablet.



## Multiple Standards support a variety of Applications

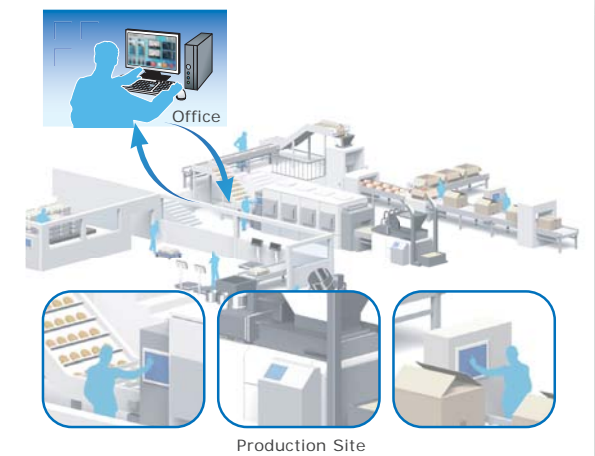
Coated components and compliance with a variety of international standards enable use in a diverse range of environments.



CCS Ship Classification is also supported.

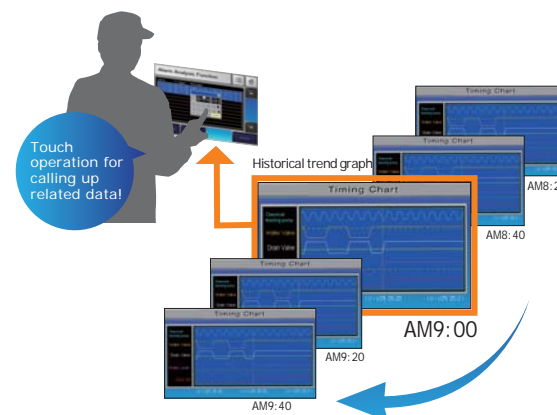
## Remote Data Collection and Management

A data management system, built with Pro-Server EX software for production quality and efficiency through HMI units installed on production machines can be simply and cost-efficiently built with standard PC software, such as Microsoft Office and SQL.



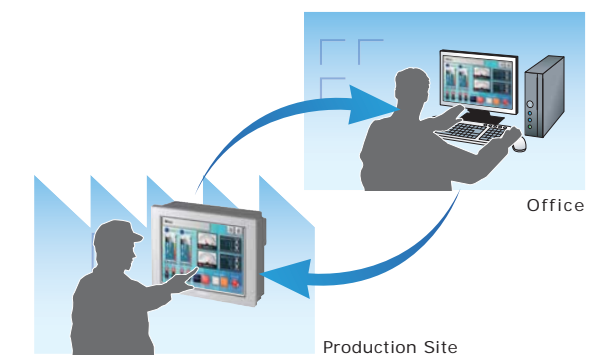
## Easy Troubleshooting

Alarm Analysis Function gives you timely understanding of error causes on site. With only a few clicks for configuration, you can set alarm analysis screens with logged status data of the alarm-related device.



## Remote Monitoring

The Remote Monitoring software, GP-Viewer EX, allows you to monitor HMI screens installed on the production site from a Windows PC in a remote location.



Standard Model	12.1" <span>AC 100-240V</span> <span>DC 24V</span> GP-4601T / GP-4603T (Isolated SIO model)	10.4" <span>AC 100-240V</span> <span>DC 24V</span> GP-4501T / GP-4503T (Isolated SIO model)	7.5" <span>DC 24V</span> GP-4401T	5.7" <span>DC 24V</span> GP-4301T / GP-4303T (Isolated SIO model)	3.5" <span>DC 24V</span> GP-4201T / GP-4203T (Isolated COM SIO model)					
	Display (Resolution)		65,536-color TFT (SVGA 800 x 600 pixels)		65,536-color TFT (VGA 640 x 480 pixels)		65,536-color TFT (VGA 640 x 480 pixels)		65,536-color TFT (QVGA 320 x 240 pixels)	
	Touch Panel Type		Analog or Matrix (Support Two-Point Touch)				Analog			
	Memory		32MB (Application), SRAM320KB(Backup for HMI), SRAM64KB(Backup for Control)				16MB (Application), SRAM320KB(Backup for HMI), SRAM64KB(Backup for Control)			
	Ethernet		x1 (IEEE802.3i / IEEE802.3u,10BASE-T/100BASE-TX)				x1 (IEEE802.3i / IEEE802.3u,10BASE-T/100BASE-TX)			
	SIO		RS-232C×1, RS-422/485×1		RS-232C×1, RS-422/485×1		RS-232C/422/485×1			
	SD Card Slot (Max. 32GB)		x 1		x 1		No			
	USB		USB Type-A (2.0) x 1, USB mini-B (2.0) x 1		USB Type-A (2.0) x 1, USB mini-B (2.0) x 1					
	Replaceable Battery		Yes		Yes		No (Rechargeable battery)			
	Alarm Analysis DB Function		Yes				Yes			
Other models		Coated model: Yes / Color variation: Yes				Coated model: Yes / Color variation: Yes				

### Choose your color

For compatibility with equipment design or customer corporate brand, the GP front panel color can be selected.



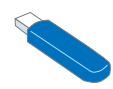
Silver PANTONE 8401C  
Off-white PANTONE Cool Gray 1C  
Beige PANTONE 7535C  
Black PANTONE 432C

### Enhanced DataHandling

Easily transfer and update screen and production data, such as logging, recipe, alarm history and operation log, via SD card, USB Flash memory, USB connection and Ethernet.



SD Card



USB Memory

W Model	10.4" <span>DC 24V</span> GP-4501TW	7.0" wide <span>DC 24V</span> GP-4401WW	5.7" <span>DC 24V</span> GP-4301TW	3.5" <span>DC 24V</span> GP-4201TW				
	Display (Resolution)		65,536-color TFT (VGA 640 x 480 pixels)		65,536-color TFT (WVGA 800 x 480 pixels)		65,536-color TFT (QVGA 320 x 240 pixels)	
	Touch Panel Type		Analog					
	Memory		16MB (Application), SRAM128KB (Backup for HMI)		16MB (Application), SRAM128KB (Backup for HMI)		8MB (Application), SRAM128KB (Backup for HMI)	
	Ethernet		x1 (IEEE802.3i / IEEE802.3u,10BASE-T/100BASE-TX)		x1 (IEEE802.3i / IEEE802.3u,10BASE-T/100BASE-TX)		No	
	SIO		RS-232C×1, RS-422/485×1		RS-232C×1, RS-422/485×1			
	SD Card Slot (Max. 32GB)		x 1		x 1		No	
	USB		USB Type-A (2.0) x 1, USB mini-B (2.0) x 1		USB Type-A (2.0) x 1, USB mini-B (2.0) x 1			
	Replaceable Battery		Yes		Yes		No (Rechargeable battery)	
	Alarm Analysis DB Function		No				No	
Other models		Coated model: Yes / Color variation: Yes				Coated model: Yes / Color variation: Yes		

For detailed specifications, visit our website.

<http://www.pro-face.com/product/hmi/gp4000/spec.html>



	5.7" <small>DC 24V</small>	3.5" <small>DC 24V</small>	3.4" <small>DC 24V</small>
Modular Type	GP-4301TM Modular Type	GP-4201TM Modular Type	GP-4100 Compact Type
Display (Resolution)	65,536-color TFT (QVGA 320 x 240 pixels)		Monochrome LCD (200 x 80 pixels)
Touch Panel Type	Analog		
Memory	8MB(Application),nvSRAM128KB(Non-volatile,No Battery Needed)		2.2MB(Application),EPROM128KB*1 (Backup for HMI)
Ethernet	x1 (IEEE802.3i / IEEE802.3u, 10BASE-T/100BASE-TX)		x1 (IEEE802.3u, 10BASE-T/100BASE-TX) *2
SIO	RS-232C/422/485 x1		RS-232C/422/485 x1 *3
SD Card Slot	No		
USB	USB Type-A (2.0) x1, USB mini-B (2.0) x1		
Replaceable Battery	No		
Alarm Analysis DB Function	No		
Other models	Coated model: No / Color variation: No		

\*1:For supported features, please refer to GP-Pro EX Reference Manual. \*2:GP-4104 only \*3:Excluding GP-4104

### Compact Size and Flexible Installation

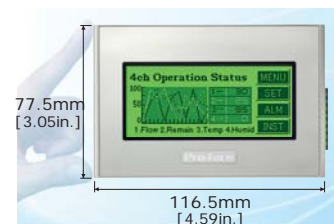
GP4000M Series



A separate installation cable is under development.

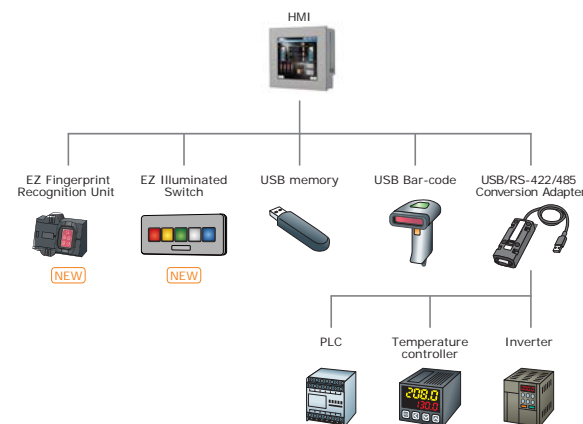
### Compact HMI with Full-graphic Display

GP4100 Series



### Easily connect multiple USB devices

A controller with serial interface, EZ Series accessory unit, bar code reader, and USB flash drive can be easily connected to the HMI unit.\*



\* EZ Fingerprint Recognition Unit also requires power supply cable.  
\* Multiple devices of the same model cannot be connected.

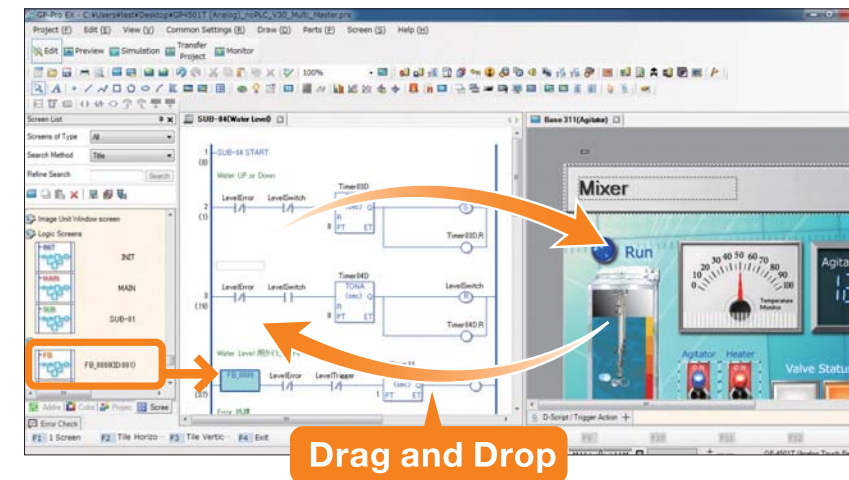
For detailed specifications, visit our website.

<http://www.pro-face.com/product/hmi/gp4000/spec.html>



Easy sharing of symbolized device data between HMI screen and control programs using drag and drop operation provides you with intuitive operation throughout the successful completion of a project.

Function Block control programming also eases your control system design with frequently used and specially defined control functions.



### GP-Pro EX Ver. 3.1 New Features

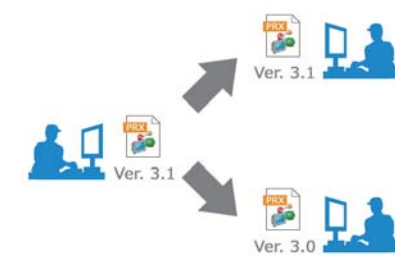
#### Quickly understand detailed differences between similar project files

Project Comparison Tool allows easy yet detailed comparison of two screen-project files for updating and modifying customer applications. Differences for each part attribute, alarm message, or setup item are displayed.

Parts 1	Address	X0001	X0002
Shape		Circle	Square
Action		Momentary	Alternate
Label		Run	Run

#### Multi-version File Format Support for Screen Project Files

Screen project files edited in version 3.1 of GP-Pro EX can also be saved in version 3.0 format to facilitate screen data handling among personnel with different responsibilities such as testing engineers, factory installation technicians, and maintenance engineers.



#### More New Features

- Change password during on-line operation
- Extended text search and replacement
- Range Setting on Word Switch
- Selectable SRAM Back-up Data Modes for Screen Data Transfer

For further informations, visit our website.

<http://www.pro-face.com/product/soft/gpproex.html>



# Pro-face

for the best interface

We are always striving to bring you the high quality interface designed to provide a cohesive, evolving connection between customers and high quality products, service and support from around the world.

All *eyes* on the customer make us "the best interface"

*i*ntimacy  
Connect intimately  
with our customers  
and stakeholders

*i*nteraction  
Enhance customer  
experience through  
positive interaction

*i*nnovation  
Provide benefits to  
our customers  
through innovation

## ⚠ WARNING

### HAZARD OF OPERATOR INJURY, OR UNINTENDED EQUIPMENT DAMAGE

Before operating any of these products, be sure to read all related manuals thoroughly.  
Failure to follow these instructions can result in death or serious injury, unintended equipment damage.

- For printing purposes, the colors in this catalog may differ from those of the actual unit.
  - Actual user screens may differ from the screens shown here.
  - Electric equipment should be installed, operated, serviced, and maintained only by qualified personnel.
  - All product names used in this catalog are the registered trademarks or trademarks of their respective companies.
  - All information contained in this catalog is subject to change without notice.
- No responsibility is assumed by Digital for any consequences arising out of the use of this material.

<p><b>Global Headquarters</b> Digital Electronics Corporation Osaka, JAPAN Tel: +81 (0)6 6613 1101 Fax: +81 (0)6 6613 5888 www.pro-face.com info@pro-face.com</p>	<p><b>North America</b> Pro-face America, Inc. Ann Arbor, MI U.S.A Tel: +1 734 477 0600 Fax: +1 734 864 7347 www.profaceamerica.com info@profaceamerica.com</p>	<p><b>Taiwan</b> Pro-face Taiwan Co., Ltd. Taipei, TAIWAN Tel: +886 (0)2 2657 1121 Fax: +886 (0)2 2657 1021 www.proface.com.tw proface@proface.com.tw</p>	<p><b>European Headquarters</b> Pro-face Europe B.V. Hoofddorp, THE NETHERLANDS Tel: +31 (0)23 55 44 099 Fax: +31 (0)23 55 44 090 www.proface.eu info@proface.eu</p>	<p><b>Italy</b> Pro-face Italia S.p.a. Bovisio Masciago (Milano), ITALY Tel: +39 (0)362 59 96 1 Fax: +39 (0)362 59 96 69 www.proface.it info@proface.it</p>	<p><b>Spain and Portugal</b> Pro-face España Cardedeu (Barcelona), SPAIN Tel: +34 (0)93 846 07 45 Fax: +34 (0)93 845 48 68 www.proface.es info@proface.es</p>			
<p><b>Australia and New Zealand</b> Pro-face Australia Mt. Waverley, AUSTRALIA Tel: +61 (0)3 9550 7396 Fax: +61 (0)3 9550 7390 www.pro-face.com.au www.pro-face.co.nz pfau@pro-face.com</p>	<p><b>Singapore</b> Pro-face Singapore TechPoint, Singapore Tel: +65-6832-5533 Fax: +65-6415-1605 www.proface.sg info@proface.sg</p>	<p><b>Austria</b> Pro-face Europe B.V. (Austria Office) Hagenberg, AUSTRIA Tel: +43 7236 3343 620 FAX: +43 7236 3343 629 www.proface.at info@proface.at</p>	<p><b>Denmark</b> Pro-face Northern Europe ApS Roskilde, DENMARK Tel: +45 70 22 01 22 Fax: +45 70 22 01 33 www.proface.dk info@proface.dk</p>	<p><b>Sweden</b> Pro-face Sweden AB Löddeköpinge (Malmö), SWEDEN Tel: +46 46 540 90 70 Fax: +46 46 71 27 90 www.proface.se info@proface.se</p>	<p><b>China</b> Pro-face China International Trading Co., Ltd. Shanghai, P. R. CHINA Tel: +86 (0)21 6361 5175 Fax: +86 (0)21 6361 5176 www.proface.com.cn proface@proface.com.cn</p>	<p><b>South-East Asia Pacific</b> Pro-face South-East Asia Pacific Co., Ltd. Bangkok, THAILAND Tel: +66 (0)2 617 5678 Fax: +66 (0)2 617 5688 www.proface.co.th psales@proface.co.th</p>	<p><b>Poland</b> Pro-face Europe B.V. (Warsaw Office) Warszawa, POLAND Tel: +48 (22) 465 66 62 Fax: +48 (22) 465 66 67 www.proface.pl info@proface.pl</p>	<p><b>Switzerland</b> Pro-face Schweiz GmbH Regensdorf, SWITZERLAND Tel: +41 (0)43 343 7272 Fax: +41 (0)43 343 7279 www.proface.ch info@proface.ch</p>
<p><b>India</b> Pro-face India Bangalore, INDIA Tel: +91 80 4333 3540/3541 Fax: +91 80 4333 3222 www.proface.co.in sales.proface@proface.co.in</p>	<p><b>South Korea</b> Pro-face Korea Co., Ltd. Seoul, SOUTH KOREA Tel: +82 (0)2 2630 9850 Fax: +82 (0)2 2630 9860 www.proface.co.kr proface@proface.co.kr</p>	<p><b>France</b> Pro-face France S.A.S. Mity-Mory, FRANCE Tel: +33 (0)1 60 21 22 91 Fax: +33 (0)1 60 21 22 92 www.proface.fr info@proface.fr</p>	<p><b>Germany</b> Pro-face Deutschland GmbH Solingen, GERMANY Tel: +49 (0)212 258 260 Fax: +49 (0)212 258 2640 www.proface.de info@pro-face.de</p>	<p><b>Russia</b> Pro-face Europe B.V. (Russia Office) Saint-Petersburg, RUSSIA Tel: +7 (812) 336 47 06 Fax: +7 (812) 336 47 18 www.pro-face.ru info@pro-face.ru</p>	<p><b>United Kingdom</b> Pro-face UK Ltd Coventry, ENGLAND Tel: +44 (0)2476 511288 Fax: +44 (0)2476 511499 www.proface.co.uk info@proface.co.uk</p>			